

HORIZONTAL CONCEALED-FASTENER WALL PANEL SYSTEM

SILHOUETTE HCF SERIES

- Horizontal concealed-fastener wall panel design
- Aesthetically pleasing for architectural, commercial and industrial applications
- Available with separate panel clip or with built-in screw flange configuration
- Select from multiple profile configurations
- 0.032" - 0.050" aluminum is available
- 24ga - 18ga steel is available
- Smooth or stucco embossed
- Asphalt impregnated expandable closure strip available
- Mitered corners are available

TECHNICAL DATA

Available Widths & Depth

12" and 16"

with 7/8" depth

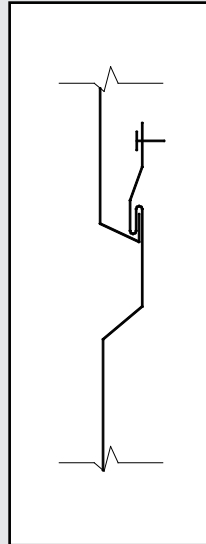
Standard Lengths

2' to 20'

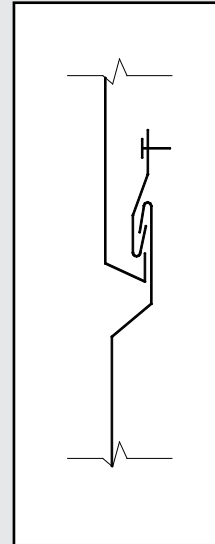
Series Designations:

WITH SCREW FLANGE	WITH CLIPS
HCF12-1	HCF12-1C
HCF12-2	HCF12-2C
HCF12-3	HCF12-3C
HCF16-1	HCF16-1C
HCF16-2	HCF16-2C
HCF16-4	HCF16-4C

with screw flange



with clips



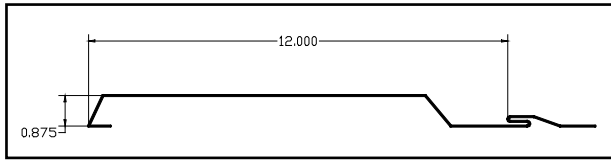
(view complete panel profile offering on back)

Silhouette HCF Series Profiles:

WITH SCREW FLANGE

12 inch nominal width

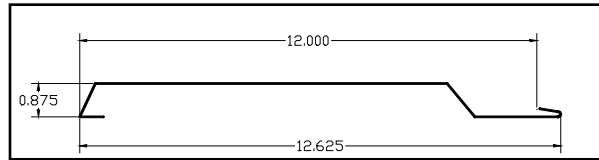
HCF12-1



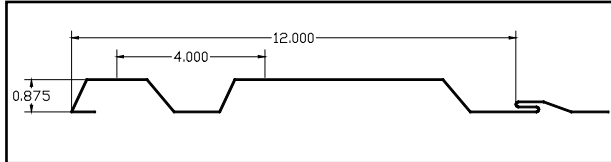
WITH CLIPS



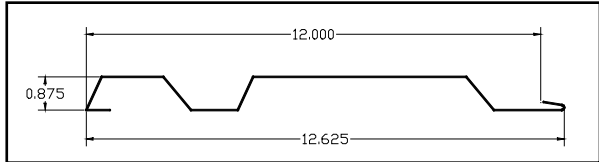
HCF12-1C



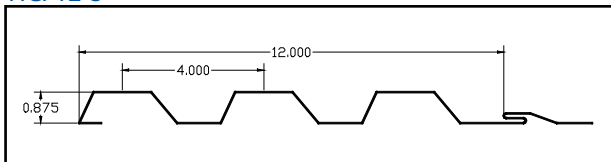
HCF12-2



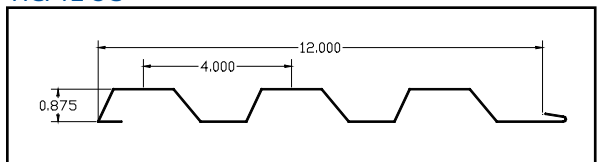
HCF12-2C



HCF12-3

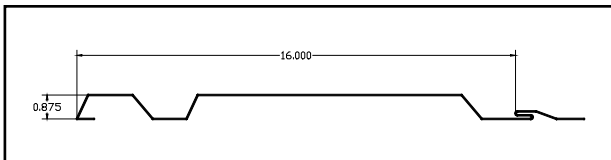


HCF12-3C

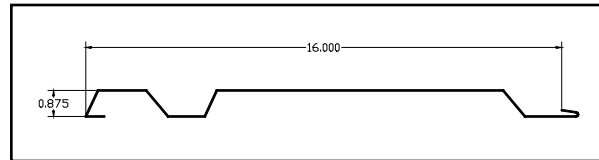


16 inch nominal width

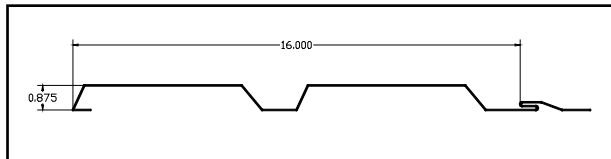
HCF16-1



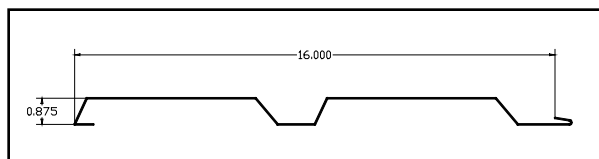
HCF16-1C



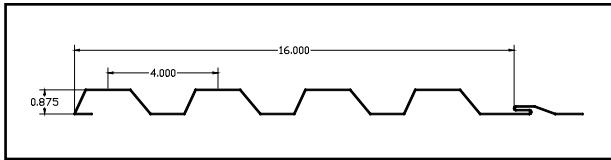
HCF16-2



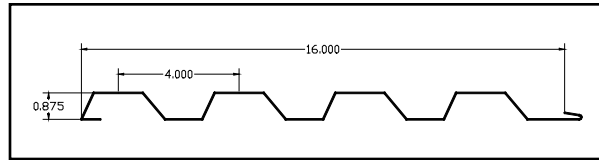
HCF16-2C



HCF16-4



HCF16-4C



www.fabral.com

a  Euramax company

Texas Facility

404 E. Dallas Road
Grapevine, TX 76051
800-477-9066
Fax 817-488-0466

Utah Facility

2402 Industry Way
Cedar City, UT 84720
800-432-2725
Fax 801-586-1294

Georgia Facility

308 Alabama Blvd.
Jackson, GA 30233
800-884-4484
Fax 770-775-6167

Oregon Facility

4570 Ridge Drive, NE
Salem, OR 97303
800-477-8028
Fax 503-393-5813

Corporate Office

3449 Hempland Road
Lancaster, PA 17601
800-477-2741
Fax 717-397-1040