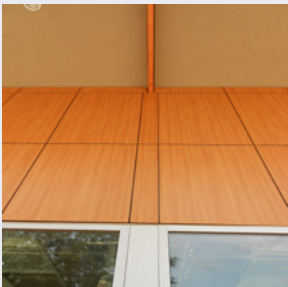
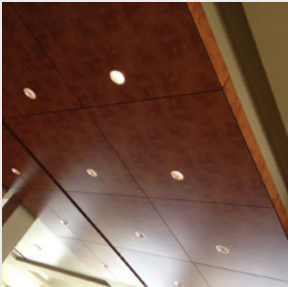




High Pressure Laminates (HPL) are highly decorative and have an integral surface. HPL facades are created to inspire, engineered to perform, and built to endure.



INNOVATIVE & FUNCTIONAL VENTILATED FAÇADE SYSTEMS **HIGH PRESSURE LAMINATE (HPL)**

HPL Wall systems stand out from every other wall system because of its high-quality, cutting edge production and revolutionizing designs. HPL compact panels are produced by saturating multiple layers of kraft paper with phenolic resin, that are thermally fused together under intense heat and pressure. The resulting panel is virtually impervious to weathering or harsh environmental conditions, while incorporating unparalleled style and safety.

Weather Resistant and Color Stable: HPL compact panels perform exceptionally well outdoors, consistently ranking at high classifications for UV-resistance and color stability. No coating or protective cover needed. Closed, non-porous surfaces limit dirt accumulation, keeping the surface smooth and easy to clean.

Solid and Sturdy: Consistent and highly dense throughout, HPL compact panels hold bolts, screws and other fixings solidly. With good compressive and tensile strength as well as excellent pullout and impact resistance, these panels are easily machined and workable.

Sustainable: HPL compact panels consist of thermosetting resins, homogeneously reinforced with up to 65% wood based fibers, sourced from FSC certified forests.

SYSTEMS

System	Product	Description
2000	HPL	<p>Exposed fastener attachment system for HPL panels</p> <ul style="list-style-type: none"> • 1" system depth • Horizontally oriented extrusions that are vented to allow for air flow to facilitate ventilation of the cavity between the substrate and panel face • Ideally suited for vertically oriented panel layouts
2100	HPL	<p>Preferred exposed fastener attachment system for HPL panels</p> <ul style="list-style-type: none"> • 1" system depth • Vertically oriented extrusions
210	HPL	<p>Concealed fastener attachment system for HPL panels</p> <ul style="list-style-type: none"> • Has back-mounted clips that hang on a horizontally mounted rail to vertically-oriented girts • System depth varies depending on wall assembly requirements

Lancaster, PA Plant: 800-477-2741 • Fax: 800-283-4289

Jackson, GA Plant: 800-884-4484 • Fax: 800-765-4484

Ft. Worth, TX Plant: 800-477-9066 • Fax: 817-488-0446

Cedar City, UT Plant: 800-432-2725 • Fax: 800-632-2725

Fabral.com • info@fabral.com

Due to product improvements, changes and other factors, Fabral reserves the right to change or delete information herein without prior notice.