

Fabral Specialty Finishes & Colors

# Color the world

FABRAL ARCHITECTURAL SYSTEMS

**FABRAL**  
METAL WALL AND ROOF SYSTEMS



Fabral stands strong as an industry innovator and manufacturer and one of the best resources in the metal construction industry. Four decades of panel design and quality manufacturing, along with nationwide facilities, have positioned Fabral's customers on top with access to the industry's widest range of products and accessories, an extensive sustainable product offering and an unmatched engineering and technical support team.

As a leader, Fabral provides the most complete finish offering - Flurobond™ High Definition Coating system, Polyester and Siliconized Modified Polyester paint systems and an unlimited spectrum of specialty finishes and colors. The specialty finishes include semi-transparent pigmented clear coats, extraordinary metallic, embossing and varying patina, stone and natural wood designs, all of which are available in aluminum. These finishes provide an optimum solution for almost every cladding, roofing and ceiling project throughout the world.

If you can imagine it, Fabral can bring it to life. Together we can color the world.



EURABUILD® - An unlimited spectrum of colors

The EuraBuild offering consists of a balanced choice of coating qualities and provides a solution for almost every architectural project. RAL and Pantone colors are only a small part of the almost limitless possibilities of which Fabral has to offer within the EuraBuild coating line.

Depending upon project specific demands such as the bends, color, gloss and warranty period the EuraBuild coatings provide an optimum solution for almost every building in any climate zone and area specific circumstances.

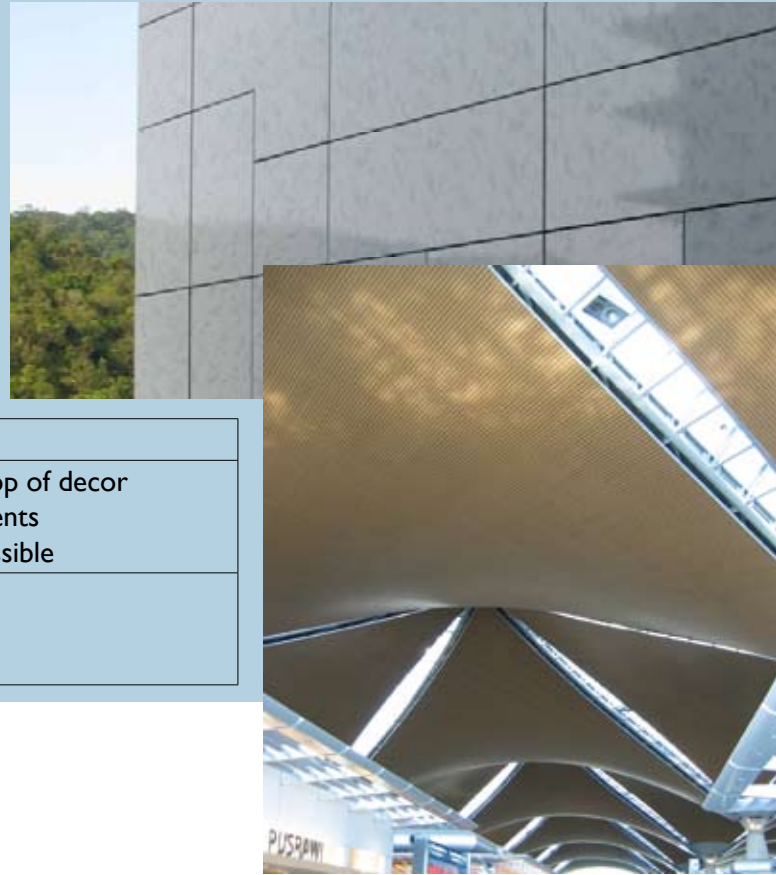
EuraBuild Options	Properties
EuraBuild (2-coat system)	<ul style="list-style-type: none"> <li>• Excellent overall properties</li> <li>• Relatively low costs per square foot</li> <li>• High durable polymer</li> <li>• Low-to-high gloss available</li> </ul>
EuraBuild PUR/PA (2-coat system)	<ul style="list-style-type: none"> <li>• Excellent overall properties</li> <li>• Very good scratch and abrasive resistance</li> <li>• Low gloss only</li> </ul>
EuraBuild PVDF 2L (2-coat system)	<ul style="list-style-type: none"> <li>• Superior overall properties</li> <li>• Long warranty period possible</li> <li>• Low-to-medium gloss available</li> </ul>
EuraBuild PVDF 3L, 4L (3 & 4-coat systems; some colors available with lumiflon clearcoat)	<ul style="list-style-type: none"> <li>• The best overall properties</li> <li>• Warranty up to 25 years</li> <li>• Low-to-high gloss available</li> <li>• Special Anti Graffiti finish available</li> </ul>



## EURADecor® - Spectacular natural and faux finish designs

Natural building materials such as stone and wood have been in practice for centuries. The exotic textures and finishes of stone and wood still make these products popular among architects. Unfortunately these materials have some disadvantages regarding weight, costs, formability and maintenance - disadvantages now solved by the EuraDecor product offering.

By combining the general aluminium advantages, it is perfectly possible to overcome these disadvantages. Decorative colors such as stripes, lettering and patterns of stone, wood, zinc, copper, rust and other looks now become possible.



EuraDecor Options	Properties
EuraDecor PVDF CC (2-coat system)	<ul style="list-style-type: none"><li>• Additional clearcoat on top of decor</li><li>• For demanding environments</li><li>• Long warranty period possible</li></ul>
EuraDecor PVDF LUM (3 and 4-coat systems; some colors available in lumiflon)	<ul style="list-style-type: none"><li>• PVDF CC in high gloss</li></ul>



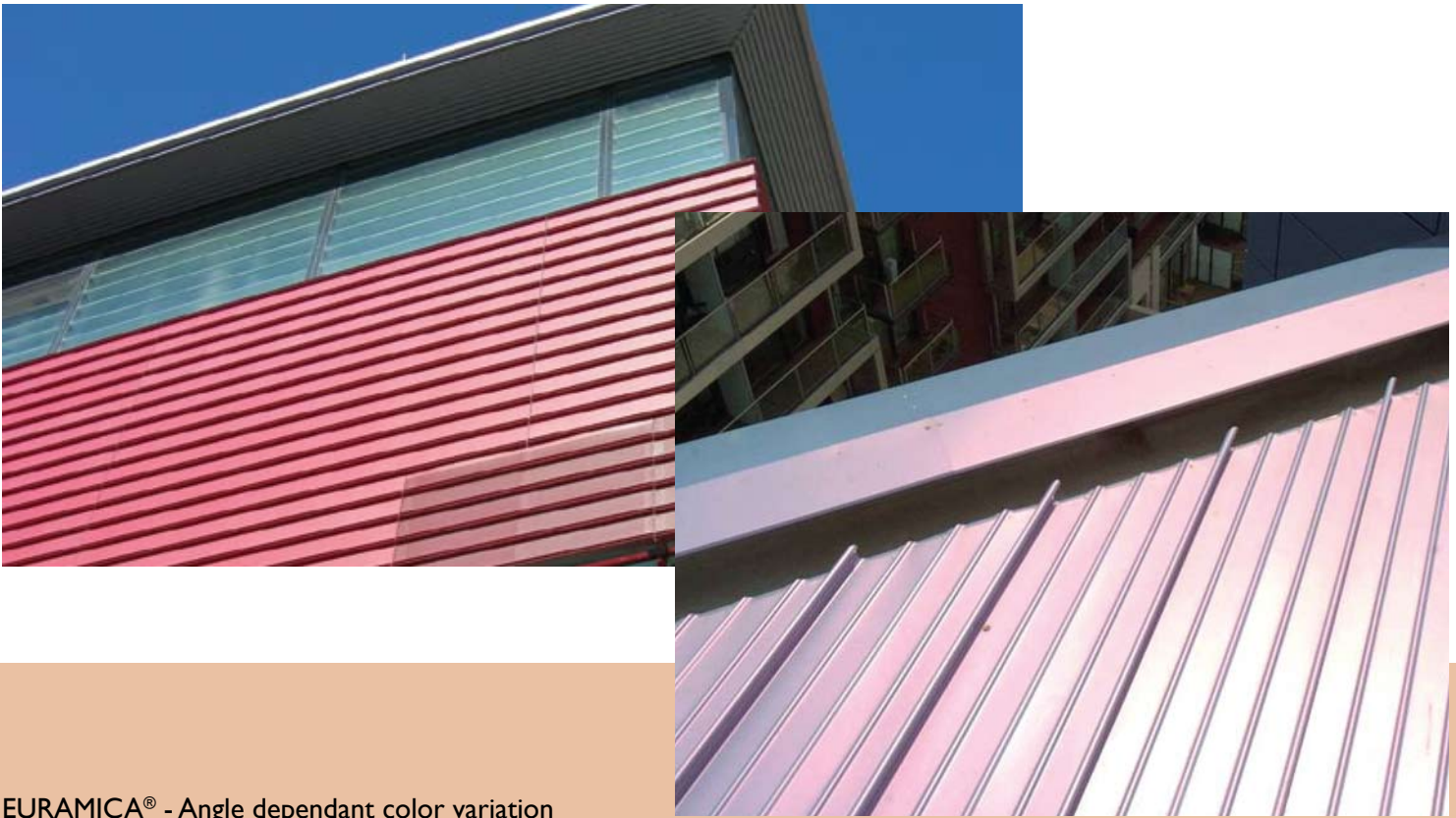
## ALUNATUR® - Natural looking aluminum finishes

Architects and developers are constantly searching for new ideas which sometimes can develop into general market trends. Presently one of these trends is the increased interest in natural looking building materials. To meet this need, Fabral Architectural Systems offers the AluNatur product offering which highlights the beauty of natural metals. This product offering enables architects and developers to extend the natural aluminium look into their cladding, roofing and ceiling designs. Due to good performances and good flexibility for roll-forming and profiling, AluNatur finishes can easily be applied in a wide variety of cladding panels.

The AluNatur product range consists of a wide range of (semi-) transparent clearcoats which are available in different coating qualities. On top of the choices in colors you can also choose between special transparent coatings and brushed substrate qualities.

AluNatur Options	Properties
AluNatur HDP	<ul style="list-style-type: none"><li>• Good overall properties</li><li>• For glosses <math>\geq 60</math></li><li>• Relatively low costs per square foot</li></ul>
AluNatur PUR/PA	<ul style="list-style-type: none"><li>• Good overall properties</li><li>• High layer thickness</li><li>• For glosses <math>&lt; 60</math></li><li>• Good scratch resistance</li></ul>



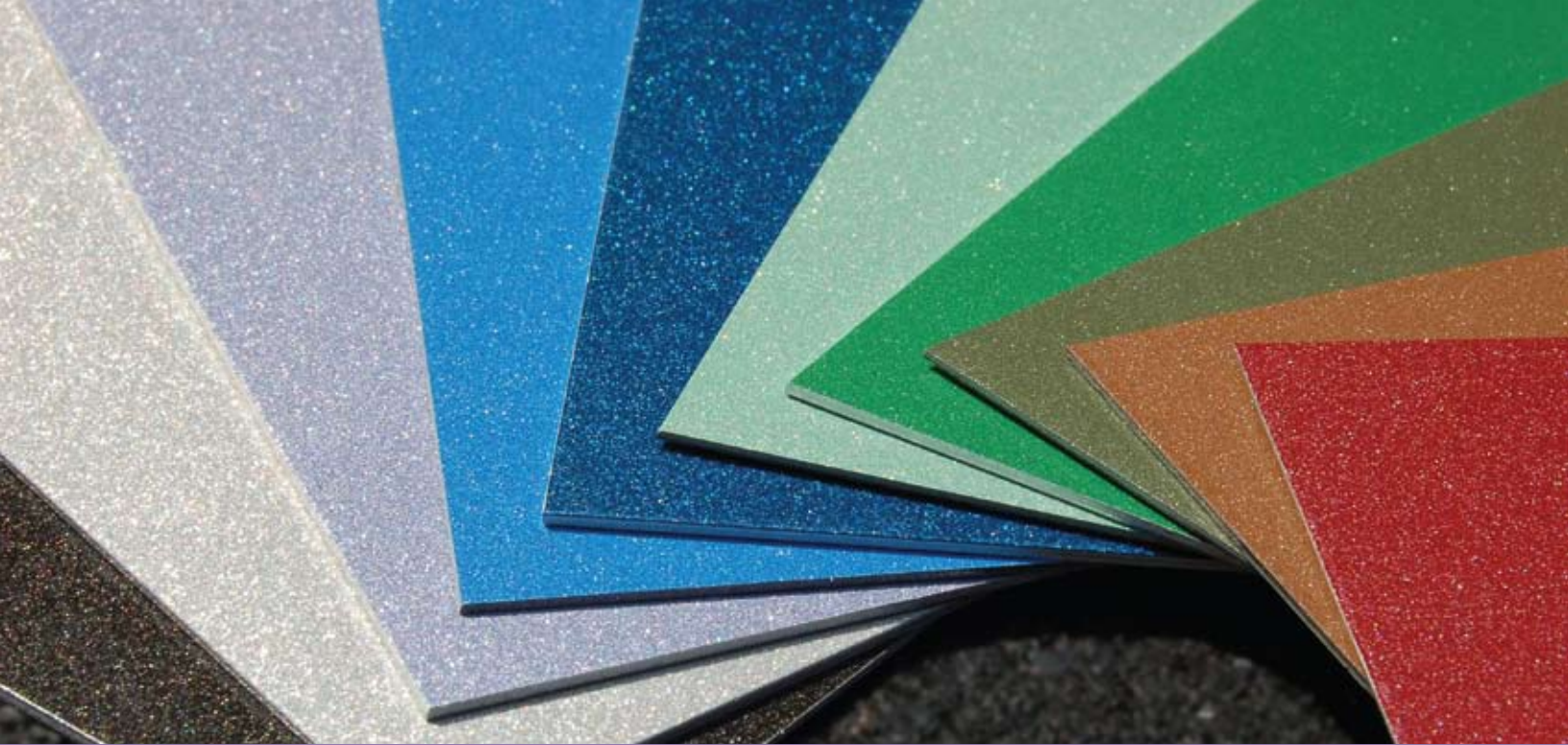


**EURAMICA® - Angle dependant color variation**

Architects and developers also have an option for creating new distinctive designs with the Euramica product offering. The Euramica product offering is based on multi-layer PVDF (Polyvinylidene Fluoride) coating systems which contain mica effect pigments. These pigments consist of coated semi-transparent mica platelets which reflect their own color but also allow the color of the basecoat to be seen. This unique combination of reflection and refraction causes a fascinating color variation that changes depending upon viewing angle and lighting.

The multi-layer Euramica PVDF coating offers superior performance characteristics such as maximum protection against weathering, solar radiation and atmospheric contaminants and excellent flexibility for roll forming and bending.

<b>Euramica Options</b>	<b>Properties</b>
Euramica PVDF 3L (3-coat system)	<ul style="list-style-type: none"> <li>• Superior overall properties</li> <li>• Warranty up to 25 year</li> <li>• Max. gloss of 30</li> </ul>
Euramica PVDF 4L (4-coat system)	<ul style="list-style-type: none"> <li>• The best overall properties</li> <li>• Warranty up to 25 year</li> <li>• Max. gloss of 30</li> <li>• Recommended in heavy environments</li> </ul>
Euramica PVDF with lumiflon clearcoat (4-coat system)	<ul style="list-style-type: none"> <li>• The best overall properties</li> <li>• Warranty up to 25 years</li> <li>• Broad gloss range available</li> <li>• High gloss enhances color effects</li> <li>• Recommended in heavy environments</li> </ul>



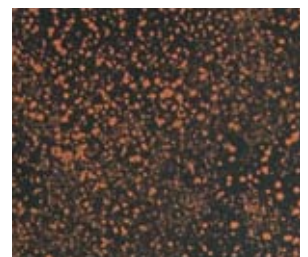
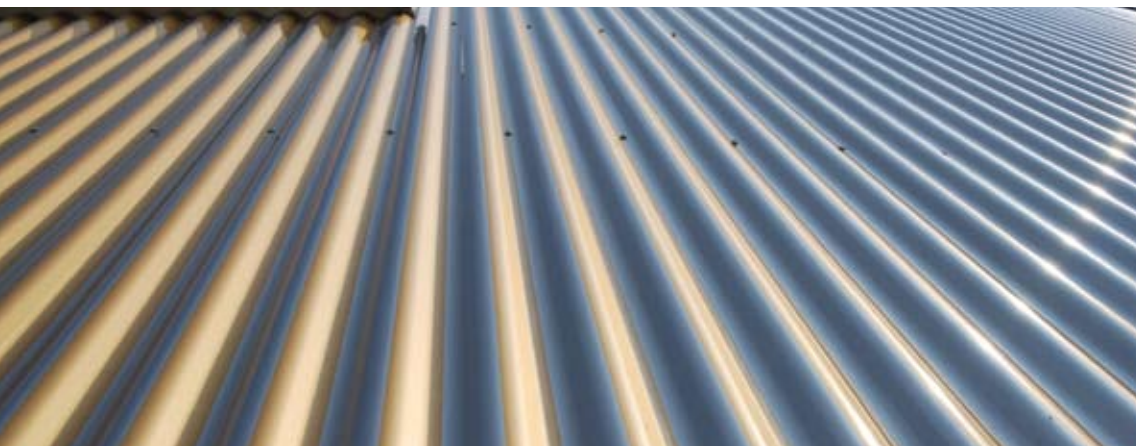
**EURADIAMOND® - Add sparkle to your design**

A highly protective coating, the Euradiamond coating offering was developed with architects and developers in mind. The system is adjustable and is comprised of a corrosion resistant primer in high layer thickness that is covered with a very durable metallic topcoat.

The high build Euradiamond coating also offers superior performance characteristics such as maximum corrosion resistance combined with excellent protection against weathering, solar radiation and atmospheric contaminants. On top of this, the Euradiamond coating offers one of the best film hardnesses on the market while preserving flexibility for roll forming and bending.

Euradiamond Options	Properties
Euradiamond PUR	<ul style="list-style-type: none"> <li>• Corrosion resistant primer</li> <li>• High durable polyurethane (PUR) topcoat</li> <li>• Superior/maximum protection against corrosion</li> <li>• High protection against cut-edge corrosion</li> <li>• Excellent protection against weathering, solar radiation and atmospheric contaminants</li> <li>• Excellent dirt repellency</li> <li>• Maximum abrasive resistance and high scratch resistance</li> <li>• Max. gloss of 30</li> </ul>

Add unlimited possibilities to your next project, and utilize the one source that offers it all—Fabral.



In addition to EuraBuild, EuraDecor, AluNatur, EuraMica and EuraDiamond - ask about EuraZinc, EuraNova & EuraTex.

## **CORPORATE HEADQUARTERS**

3449 Hempland Rd.  
Lancaster, PA 17604  
800-477-2741  
800-283-4289 Fax

## **FABRAL ARCHITECTURAL SYSTEMS**

308 Alabama Blvd.  
Jackson, GA 30233  
800-884-4484  
800-765-4484 Fax

404 E. Dallas Rd.  
Grapevine, TX 76051  
800-477-9066  
817-488-0446 Fax

4570 Ridge Dr., N.E.  
Salem, OR 97303  
800-477-8028  
503-393-5813 Fax

2402 Industry Way  
Cedar City, UT 84720  
800-432-2725  
801-586-1294 Fax

## **COPPERCRAFT DIVISION**

800-486-2723  
866-960-2144 Fax  
www.coppercraft.com

## **ADDITIONAL MANUFACTURING LOCATIONS**

- Gridley, IL
- Idabel, OK
- Lancaster, PA
- Marshfield, WI
- Saint Joseph, MN
- Spokane, WA
- Tifton, GA

a  Euramax company



[www.fabral.com](http://www.fabral.com)



For light gauge agricultural and residential products,  
contact our Woodframe division in Lancaster, PA.

98-32-147  
04/09 5K